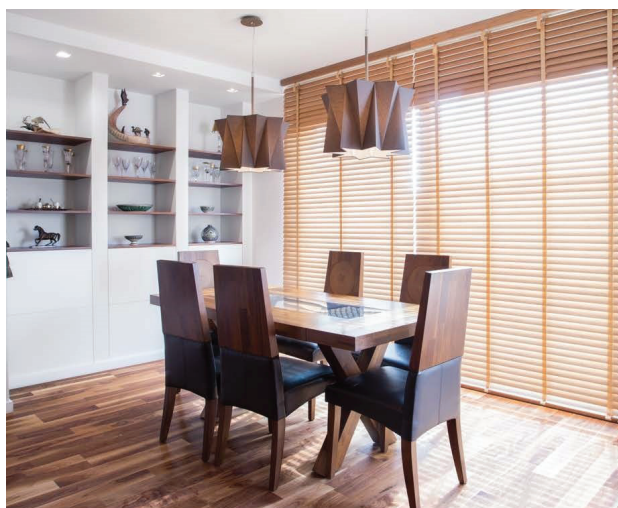


WOOD ALTERNATIVE BLINDS

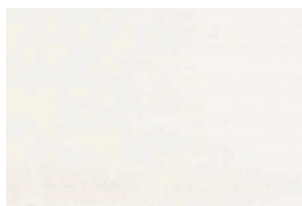


KEY FEATURES

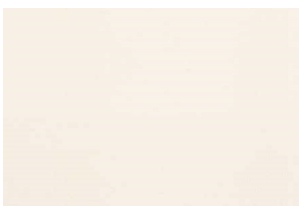
Our selection of Suntech Wood Alternative blinds offer superb performance and value while blending style and durability. Suntech Wood Alternative blinds resist moisture and heat and will not warp, peel or fade.

- Several colors, tones and textures to choose from
- Available in 2 inch and 2-1/2 inch slat sizes
- Decorative crown valance is standard
- Cotton Tape is available
- Lift & Lock™ cordless lift is available
- Steel headrail is standard
- Limited Lifetime Warranty

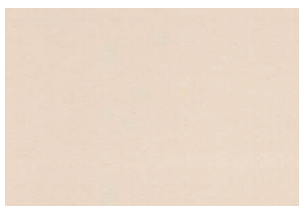
COLOR OFFERINGS



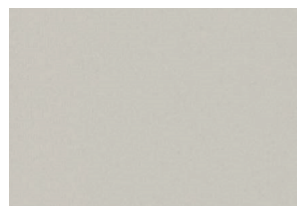
377 White



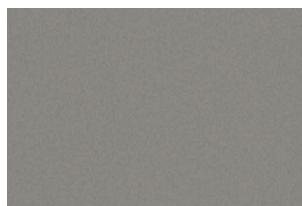
376 Antique White



375 Alabaster



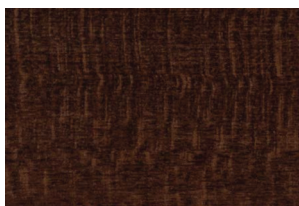
901 Light Gray



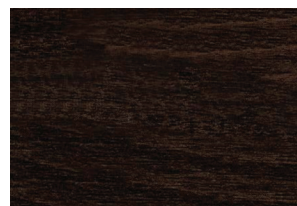
904 Dark Gray



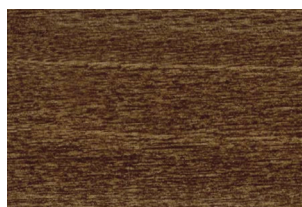
368 Modern Oak



366 Rustic Cherry



367 Black Walnut



365 Harbor Oak



364 Weathered Wood



363 Ashwood



361 Sea Mist



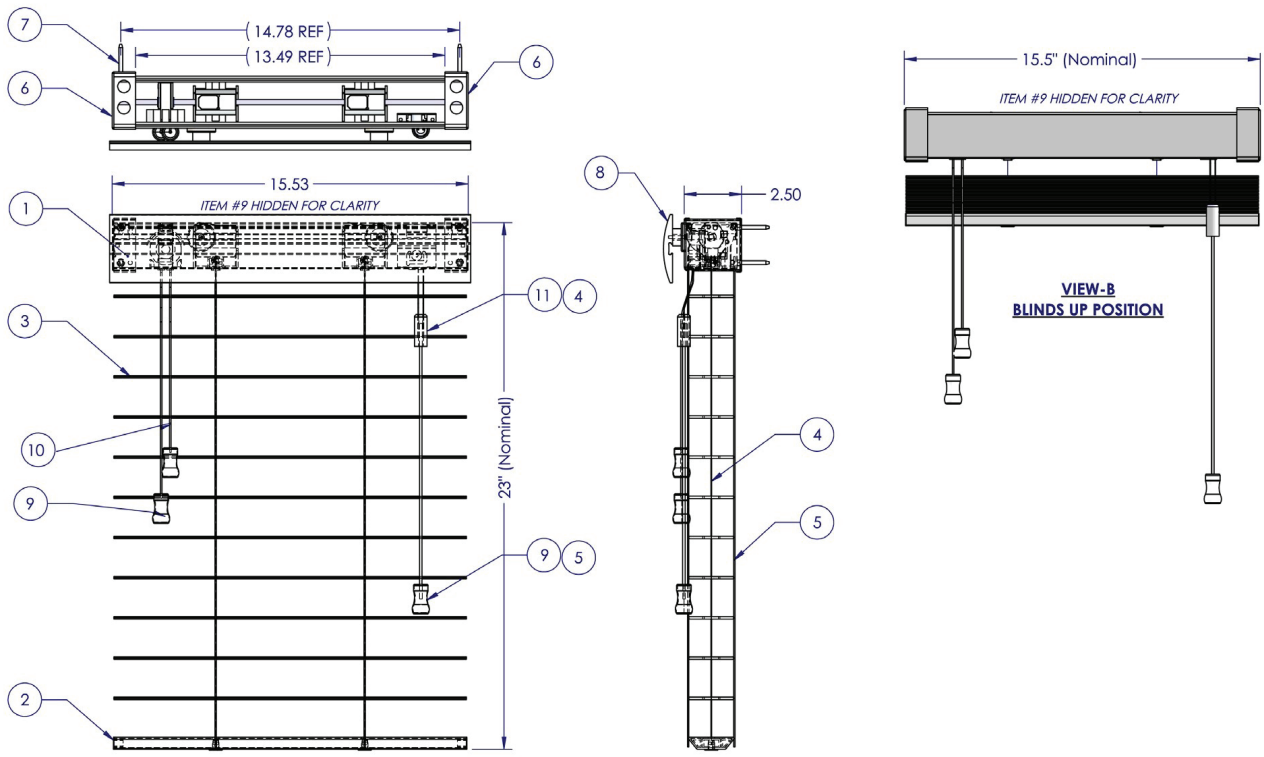
360 Driftwood



362 Gray Wash

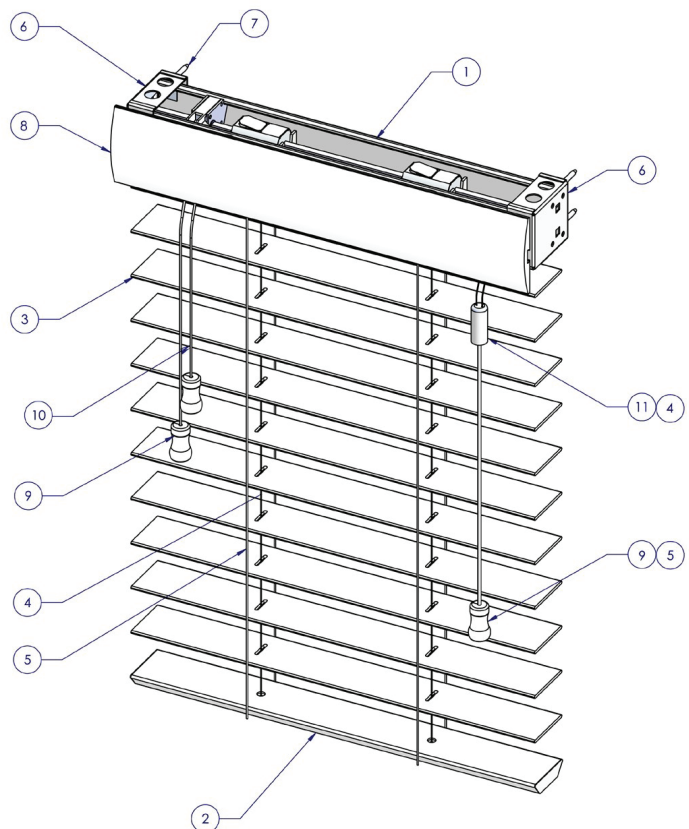
2" & 2 1/2" WOOD ALTERNATIVE BLINDS

TECHNICAL DRAWING



ITEM DESCRIPTION

1. Head Rail
2. Bottom Rail
3. Slat
4. Cord, Center
5. Cord, Outer Dual
6. Installation Bracket
7. Screw, Hex Cross
8. CN-Valance
9. Cord Handle
10. Cord, Tilt
11. Cord Union Clip, Group



2" WOOD ALTERNATIVE BLINDS

MATERIALS:

- a. SLATS: 2" x 2.28mm thick color coordinated PVC – Passes 500 hour UV rated & NFPA 701 Fire retardant test. Finish with manufacturer's standard colors selected by architect from manufacturer's available contract colors.
- b. SLAT SUPPORT: Braided ladders of 100% polyester yarn color compatible with slats and spacing no more than 44mm. Optional cloth tapes constructed of high strength polyester-cotton blend webbing and spacing of no more the 44mm. Tapes spaced to comply with industry standards for size and weight of blind.
- c. HEADRAIL: Heavy-duty, high-profile steel measuring 2" x 2 ¼" with U shaped rolled edges treated with iron phosphate to resist corrosion. Internally fit with components required for specific performance and designed for smooth, quiet trouble- free operation. Headrail finish to be standard baked-on polyester and to coordinate with slats.
- d. BOTTOMRAIL: Hollow trapezoid with recessed end caps. Color-coordinated PVC 50mm width x 15mm height – passes 500 hour UV rated & NFPA 701 Fire retardant test. Engineered polymer tape buttons secure the ladder and cord. Finish to be manufacturer's standard colors or stained finish to match slats.
- e. LIFTING MECHANISM: Engineered polymer and galvanized steel housing cordlocks with polymer roller bearing and steel locking dogs. Two-ply polyester cord filler in braided polyester jacket lift cords meet or exceed commercial specification 1029.86. Cord connectors are ANSI standard color coordinated breakaway safety devices passing ANSI/WCMA 5.2.4.
- f. TILT MECHANISM: Permanently lubricated die-cast worm and gear type tilter. Gear mechanism in fully enclosed housing with clutch action to prevent ladder tapes from over-rotation.
- g. OPTIONAL TILT CONTROL WAND: Rounded 3/8" diameter, constructed of PVC, color coordinated to match slats and detachable without tools. Located on either side of individual blind unit per architect's request.
- h. MOUNTING HARDWARE: Standard hinged cover end support brackets of electroplated steel with finish coat of baked on polyester enamel in color to match headrail. Intermediate support brackets for blinds over 60" wide.
- i. VALANCE: VALANCE: 3 ¼" Fauxwood decorative valance. Color coordinated PVC- passes 500 Hour UV rated & NFPA 701 Fire retardant test.
- j. OPTIONAL SHALL INCLUDE: Cloth Tapes, 2 or 3 Blinds on 1 Headrail, Hold Down Brackets, Cutouts, Extension Brackets, Tilt Wand.